



Alliance for Healthier Communities

Alliance pour des communautés en santé

Attachment and Access Using an Equity Approach

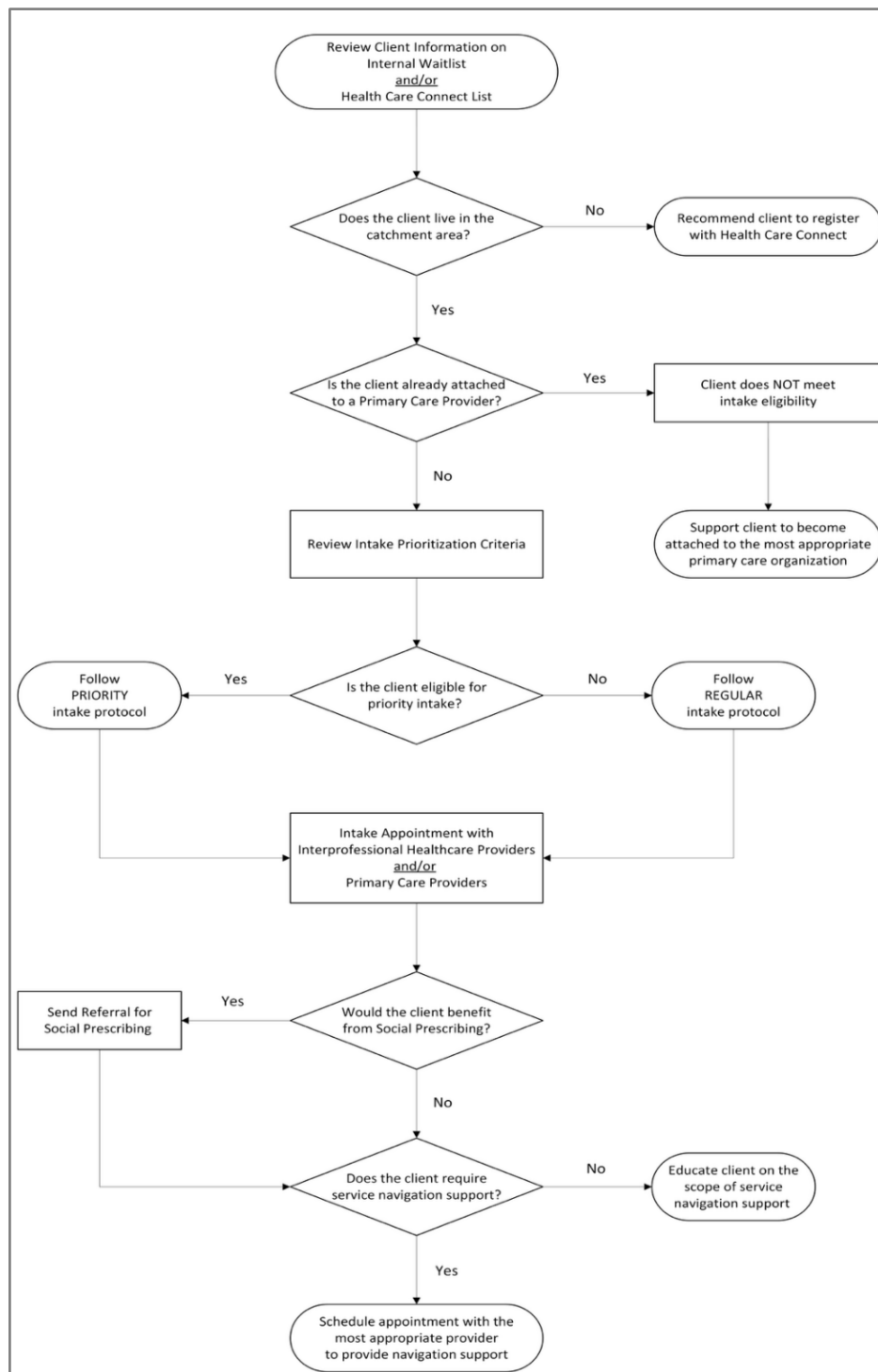
Intake Prioritization Criteria Compiled from Member Organizations

The criteria listed in this table are being used by Alliance members who have received IPCT Expansion funding. Your organization may wish to use one or more of these criteria or create your own based on your priority population(s), community needs and assets, and organizational capacity.

Criteria	Description
Disability Support	Requires support related to a disability
Economic Status	Living on a low income
Family Connection	Has an immediate family member currently attached as a client
Family Safety	Vulnerable child or part of a family experiencing violence
Housing Status	Homelessness, under-housed, or couch-surfing
Immigration & Settlement	Recent newcomer within the last five years
Indigenous Identity	Indigenous (First Nations, Métis, or Inuit)
Justice System	Has involvement with the justice or correctional system
Language Community	Self-identifies as Francophone
Language Support	Requires language interpretation or translation services
Medical Conditions	Requires management support for chronic or medically complex conditions
Mental Health	Requires support for mental health conditions
Migration Status	Refugee or migrant worker
Racial Identity	Belongs to a racialized group
Sexual & Gender Identity	Self-identifies as a member of the 2SLGBTQ+community
Substance Use	Requires support for substance use disorders
Transportation	Has limited access to transportation

An Adapted Process Map for Eligibility Screening and Intake Prioritization Based on Member Organization Data

This process map was created collaboratively with Alliance member organizations who have received IPCT Expansion funding.



[Click here to see an enlarged image of this process map.](#)

[Click here to access a text-only version of this process map for screen readers.](#)

